

Supporting & Sustaining Permanency Part 1

June 7th, 2018



CO-FACILITATORS

Julie Collins, MSW LCSW, Vice President
Practice Excellence, CWLA

Kirk O'Brien, Director - Research, Casey
Family Programs



File View Help

Attendee List (2 | Max 1001)

Attendees (1) Staff (1)

NAMES - ALPHABETICALLY

		Nick Pav (Me)
--	--	---------------

Search

Audio

Telephone
 Mic & Speakers

Dial: +1 (480) 297-0020
Access Code: 653-510-658
Audio PIN: 54

If you're already on the call, press #54# now.



[Problem dialing in?](#)

Questions

[Enter a question for staff]

Send

Webinar
Webinar ID: 726-486-617
GoToWebinar



Today's Speakers

David Hall

*National Foster Care
Youth
& Alumni Policy Council*

Kristen Rudlang-Perman

Casey Family Programs

Linda Bass

KVC Kansas

Yvonne Humenay

Roberts

Casey Family Programs

Polling Question #1

QUESTION:

What is your role?

ANSWER (please choose one)

- Direct service staff
- Administrator
- Court staff
- Researcher
- Other – (*Please indicate in the Question section*)



SAFE STRONG SUPPORTIVE

casey family programs

Supporting & Sustaining Permanency

Part 1: June 7, 2018

SAFECHILDRENSTRONGFAMILIESSUPPORTIVECOMMUNITIESSAFECHILDRENSTRONGFAMILIESSUPPORTIVE
COMMUNITIESSAFECHILDRENSTRONGFAMILIESSUPPORTIVECOMMUNITIESSAFECHILDRENSTRONGFAMILIESS
SUPPORTIVECOMMUNITIESSAFECHILDRENSTRONGFAMILIESSUPPORTIVECOMMUNITIESSAFECHILDRENSTRONG
FAMILIESSUPPORTIVECOMMUNITIESSAFECHILDRENSTRONG
FAMILIESSUPPORTIVECOMMUNITIESSAFECHILDREN
STRONGFAMILIESSUPPORTIVECOMMUNITIESSAFE
CHILDRENSTRONGFAMILIESSUPPORTIVECOMMUNITIESS

safe children | strong families | supportive communities

SAFE STRONG SUPPORTIVE

David Hall

National Foster Care Youth & Alumni Policy Council

HOW I COULD HAVE SUSTAINED PERMANENCY AND PREVENTED RE-ENTRY

SAFE STRONG SUPPORTIVE

Kristen Rudlang-Perman

Casey Family Programs

WHAT DOES THE NATIONAL DATA TELL US ABOUT RE-ENTRY?

Glossary of Terms

- Re-entry

Children who exit to legal permanency (reunification with parents or other relatives and guardianship) and return to care.

- Sustained Permanency

The continuing stability, safety, and well-being for children and youth who have moved from the temporary custody of the child welfare system into a permanent legal arrangement with committed caregivers.

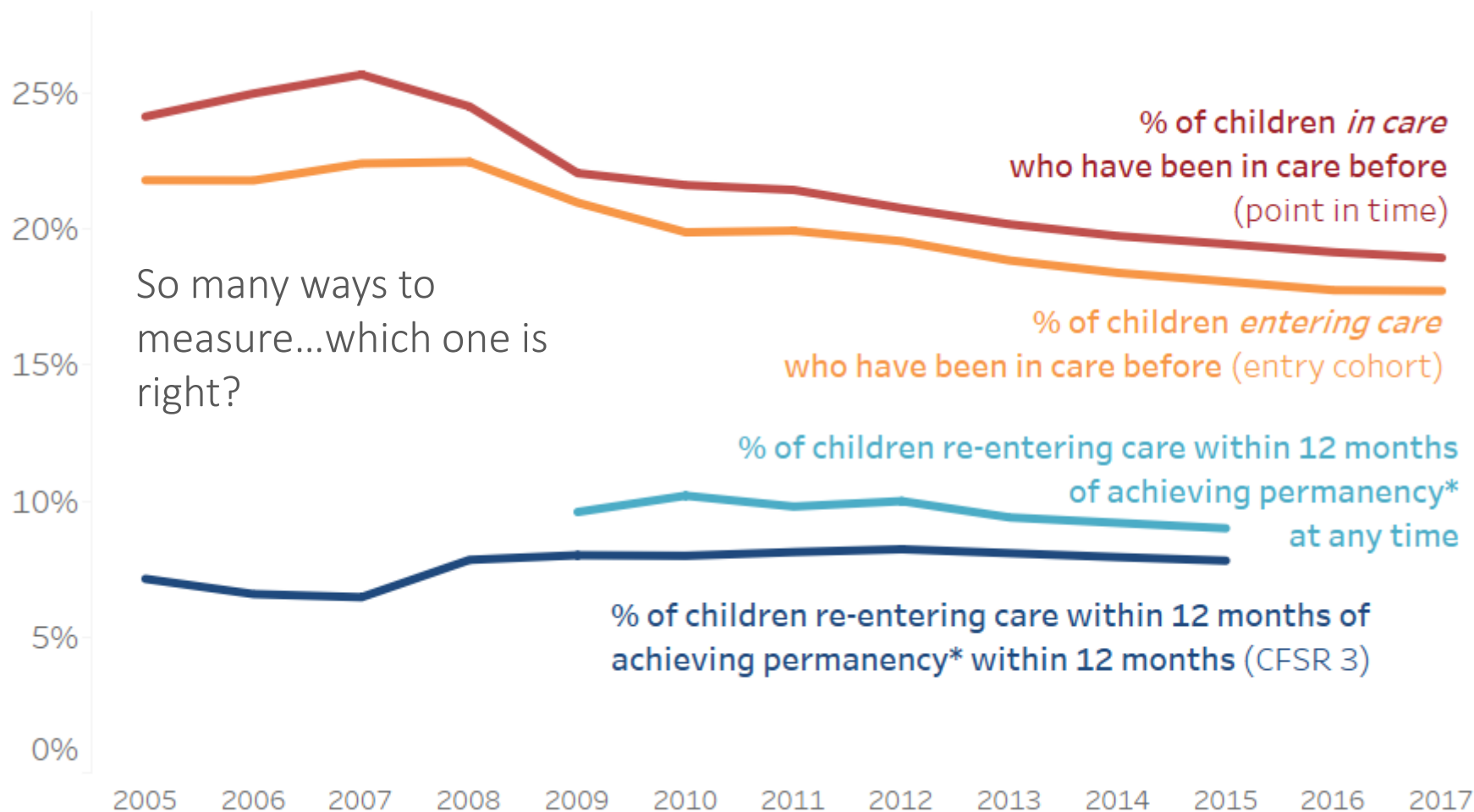


What we'll learn about re-entry from the data...

- How do you measure re-entry?
- What are the national trends?
- Who re-enters....and when....and why?
- What else do we need to know?

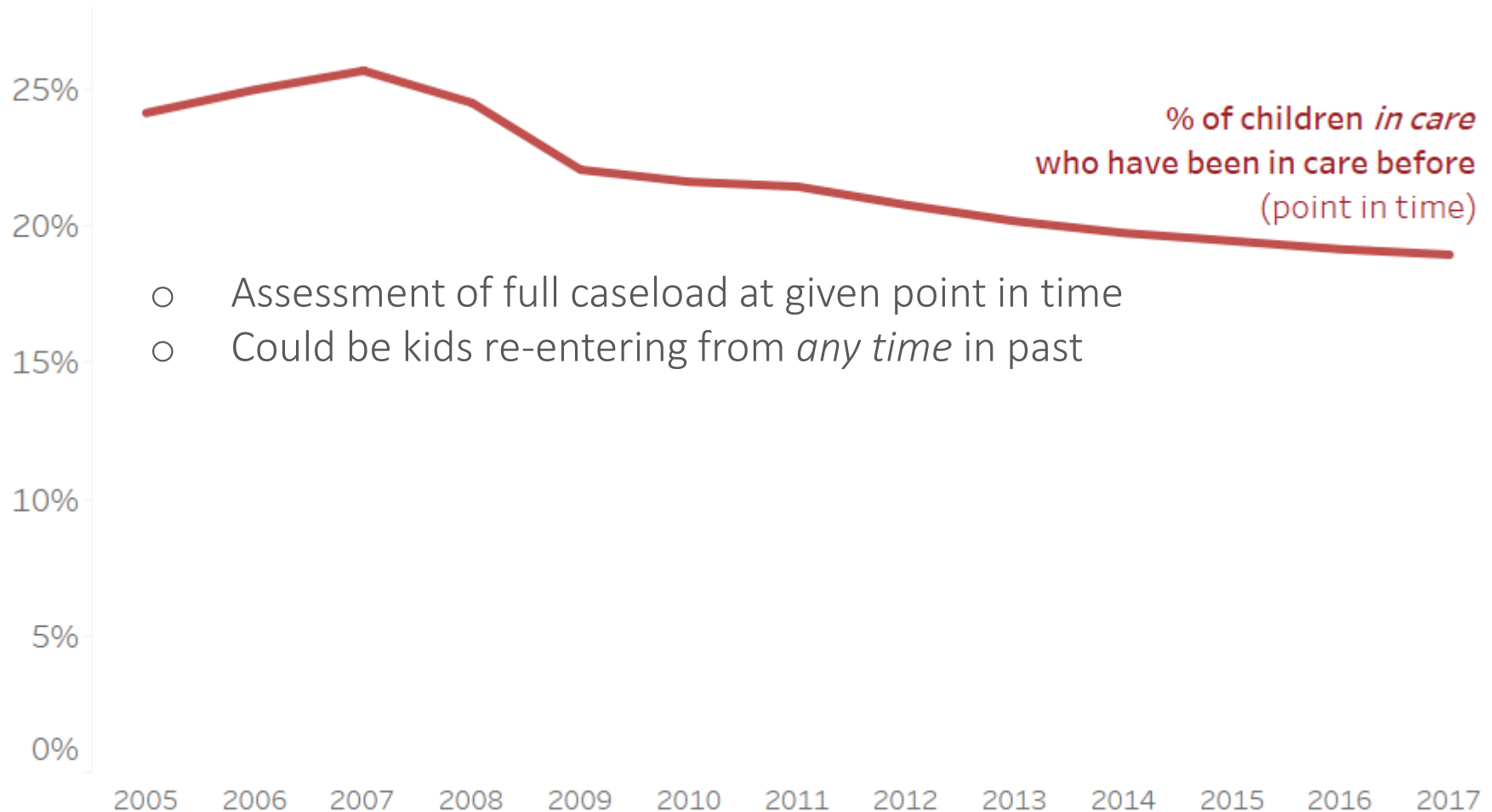
Data source throughout slides: state AFCARS and NCANDS files submitted directly to Casey Family Programs

How do you measure re-entry?

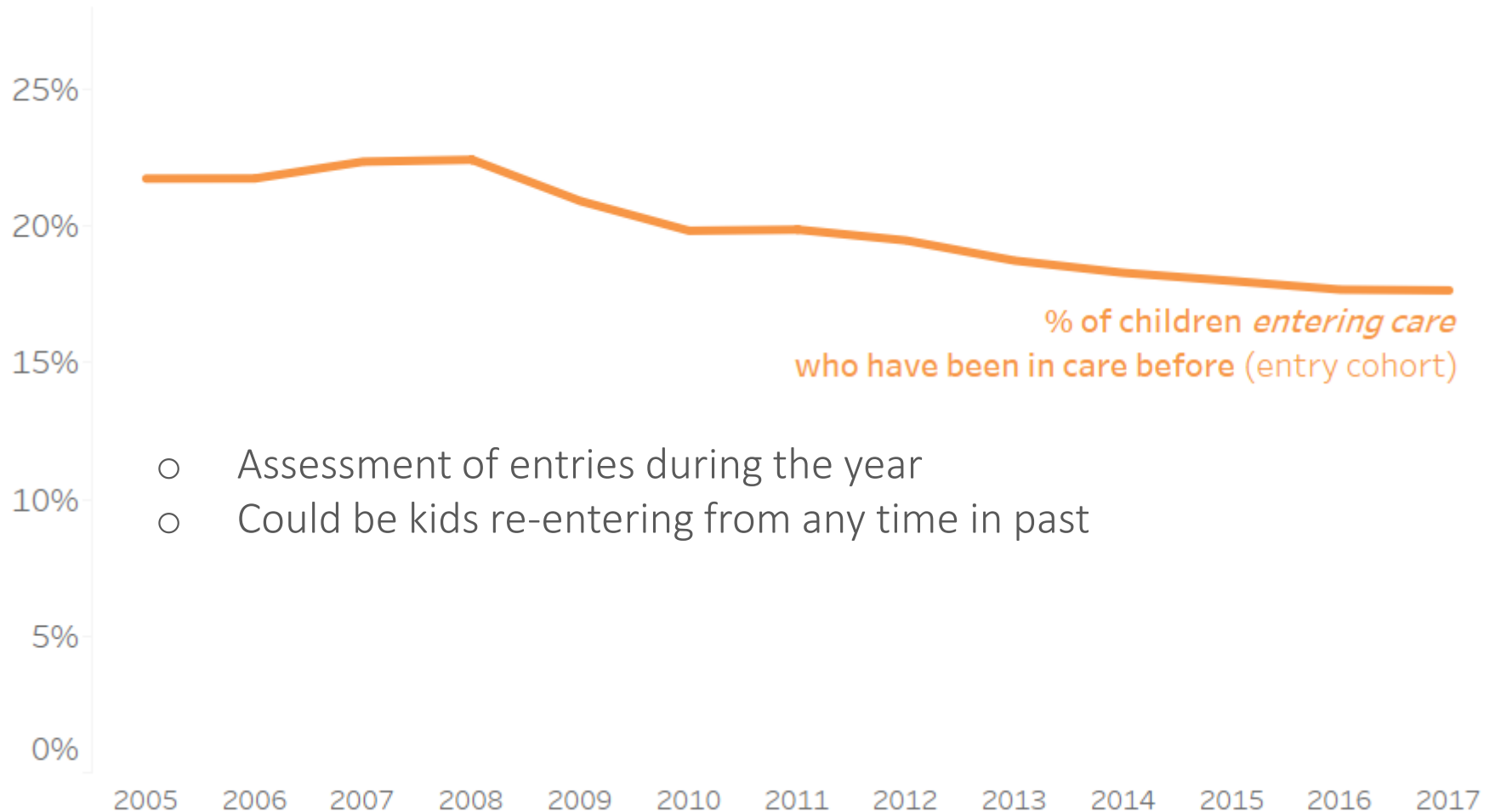


* Permanency includes reunification, guardianship and live with relatives

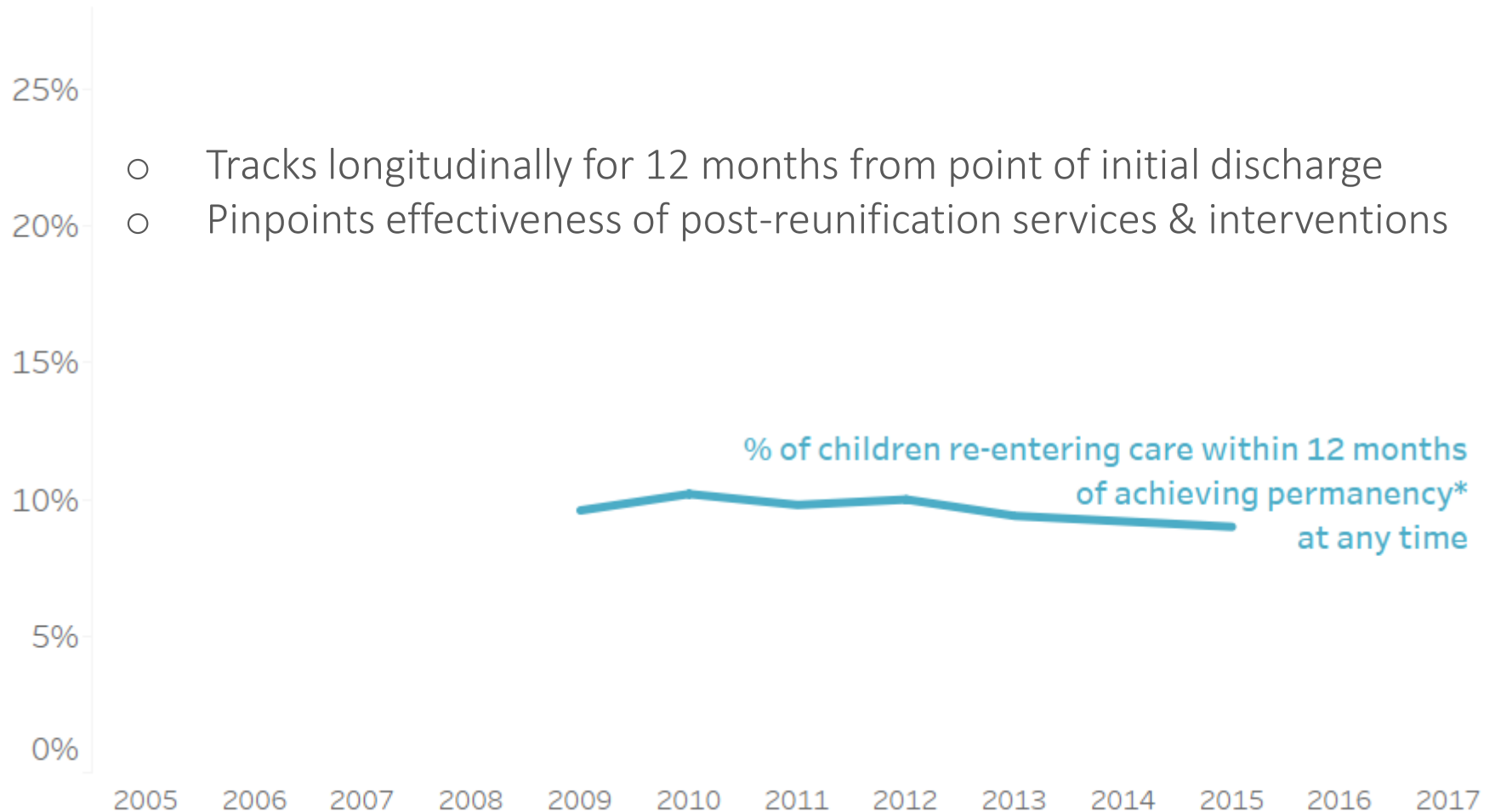
How do you measure re-entry?



How do you measure re-entry?

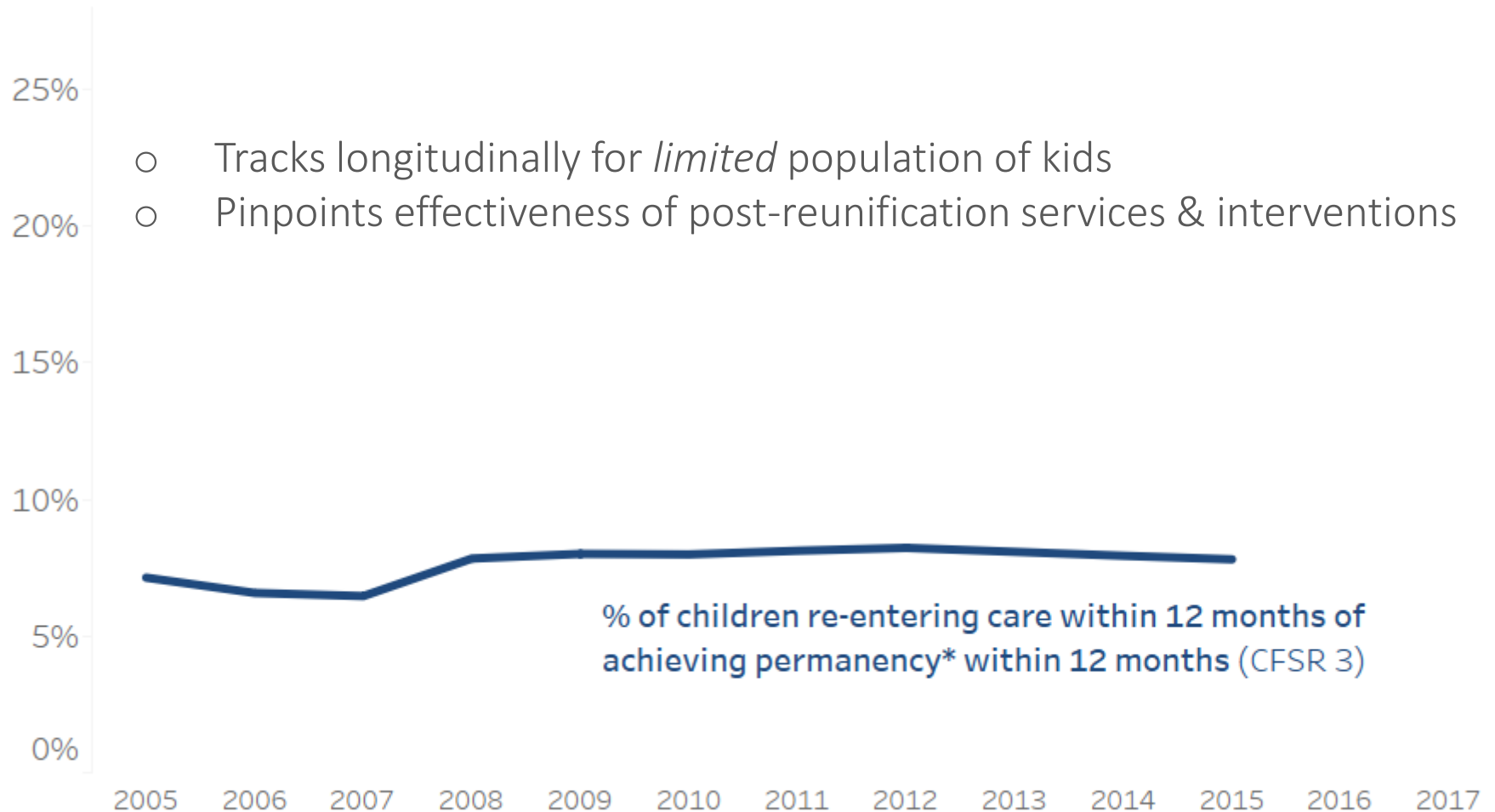


How do you measure re-entry?



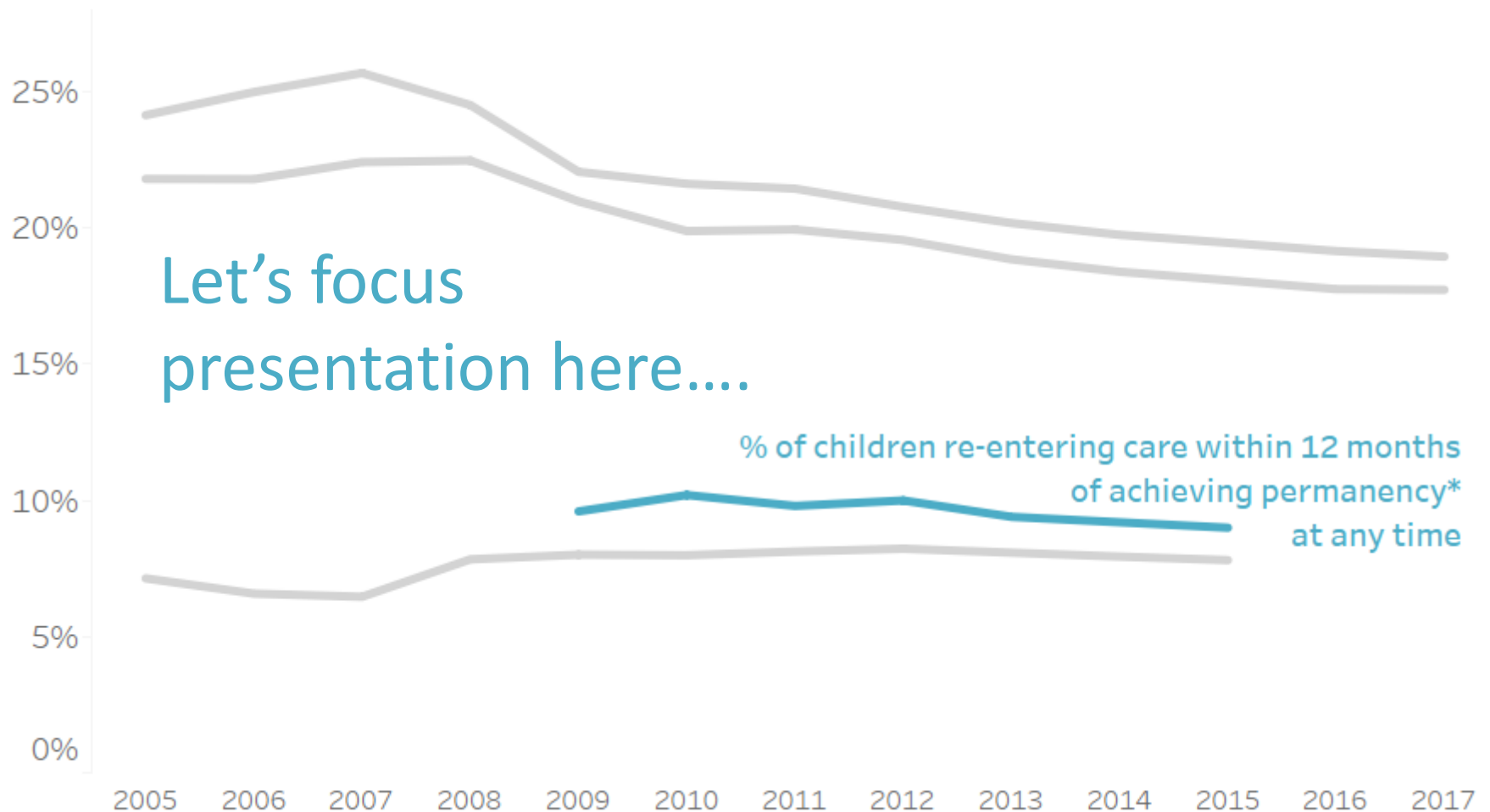
* Permanency includes reunification, guardianship and live with relatives

How do you measure re-entry?



* Permanency includes reunification, guardianship and live with relatives

What are the national trends?

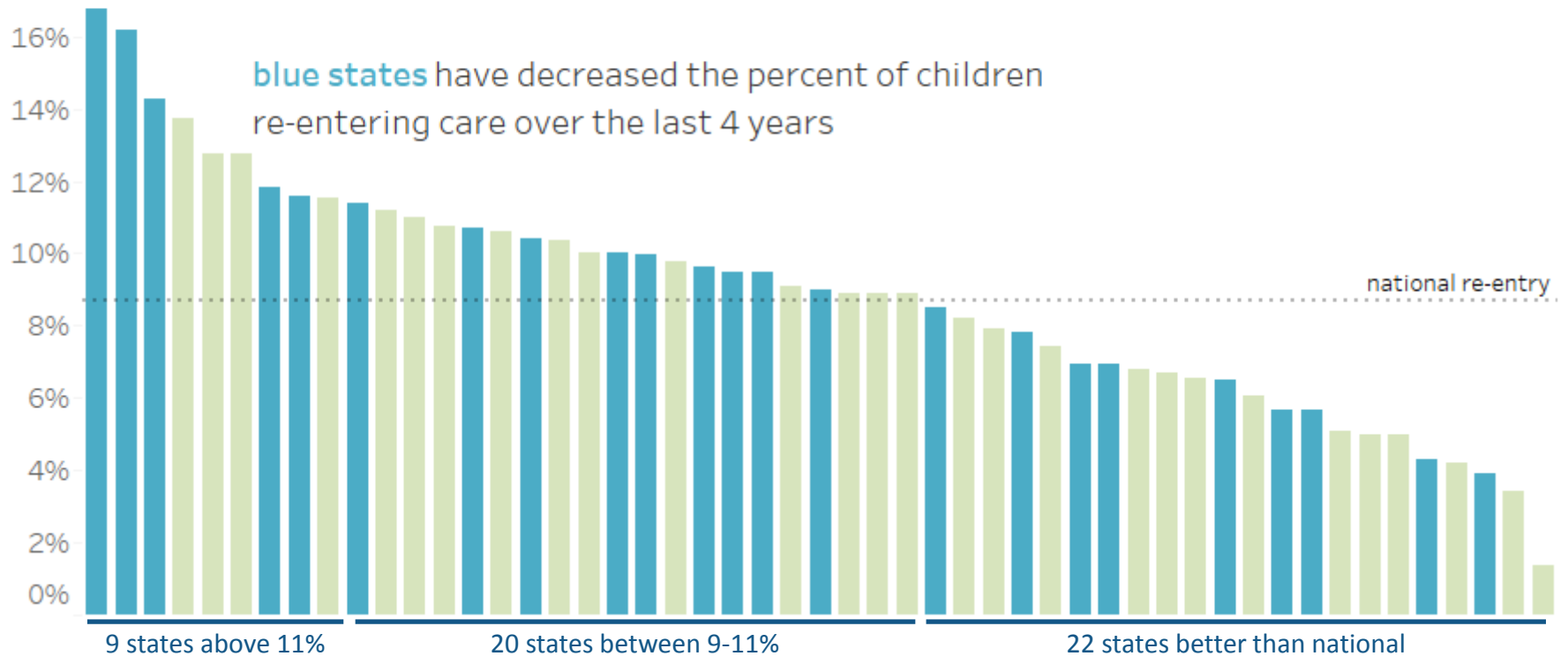


* Permanency includes reunification, guardianship and live with relatives

What are the national trends?

View Across States

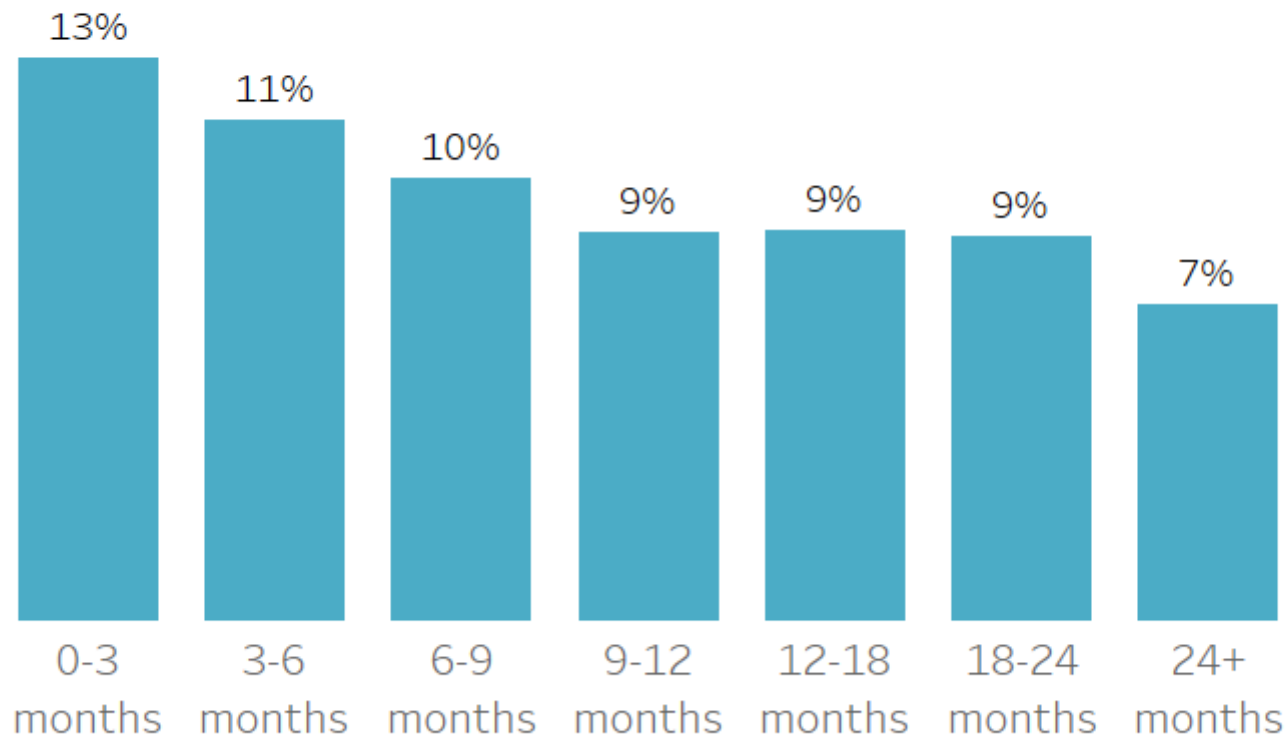
% of children re-entering care within 12 months of achieving permanency*
(reunification, live with relatives, guardianship)



Who re-enters... and when... and why?

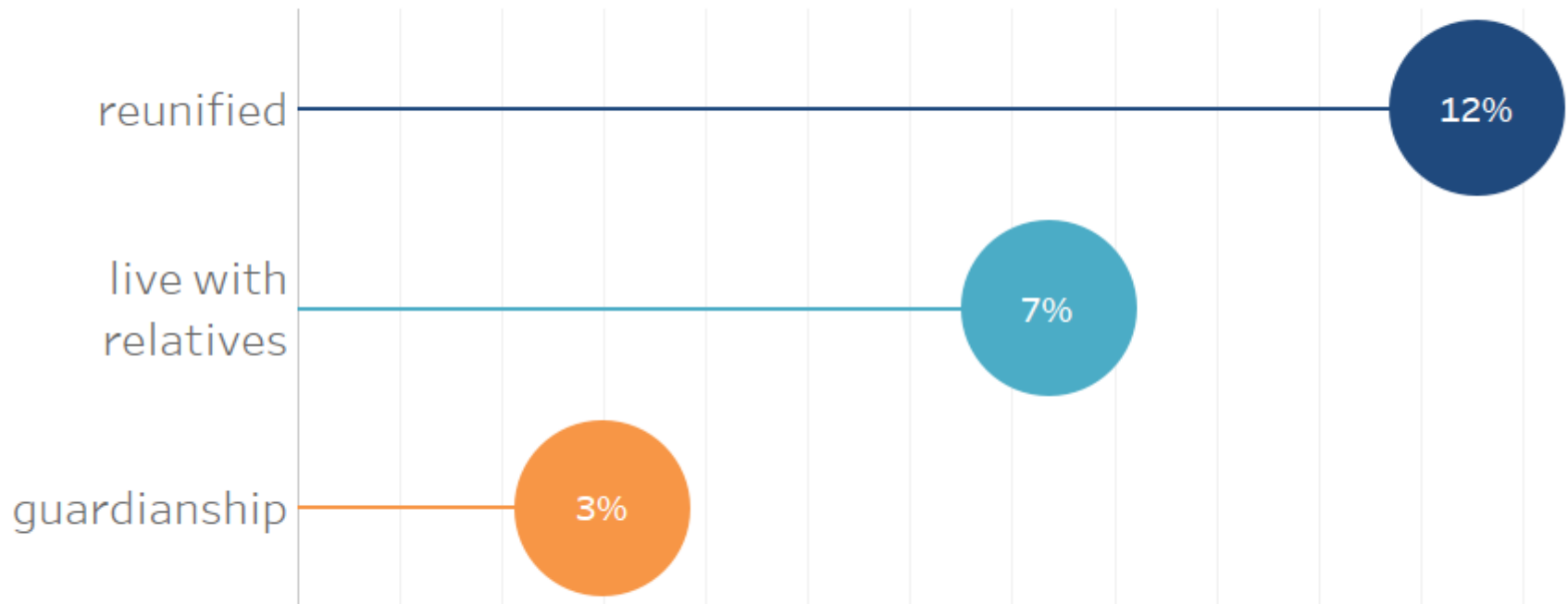
Length of time in prior episode

% of children re-entering care by time in care during prior episode



Who re-enters... and when... and why?

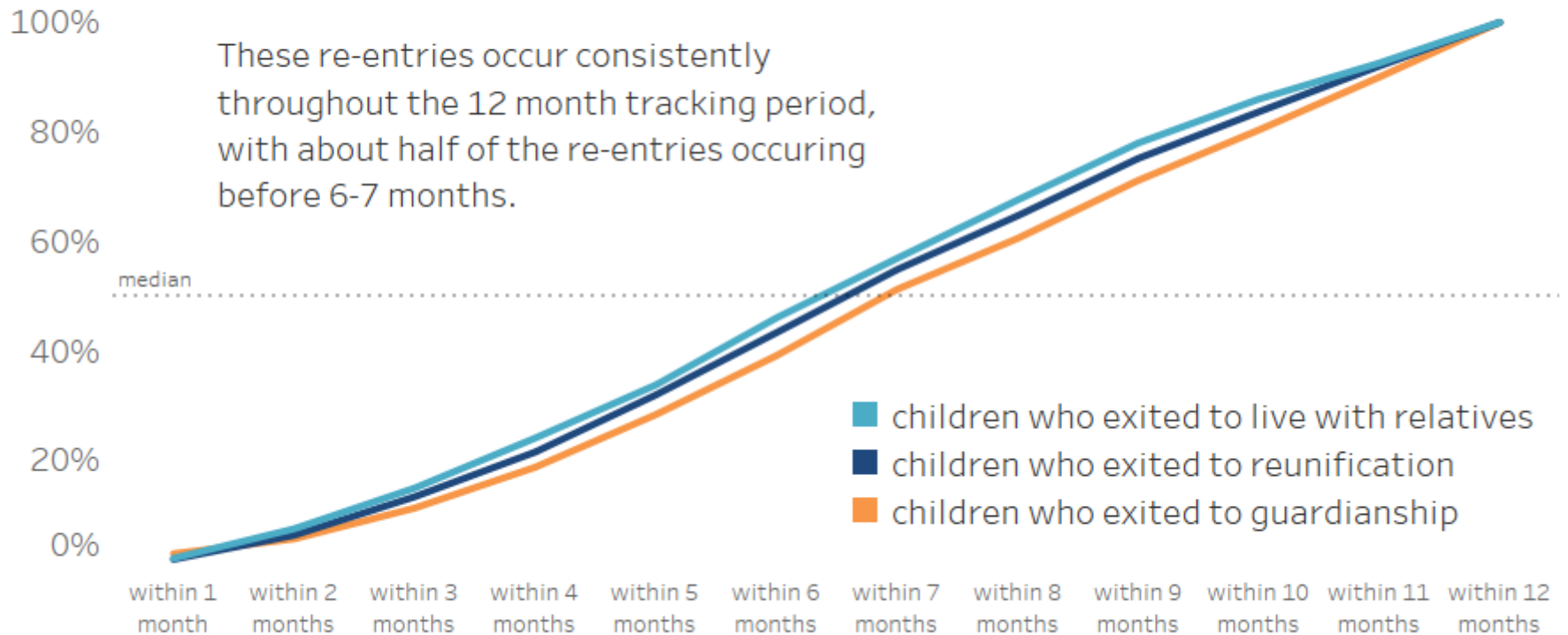
% of children re-entering in 12 months, by type of discharge
(cohorts of children discharged between 2013-2015)



Who re-enters... and when... and why?

Time to re-entry

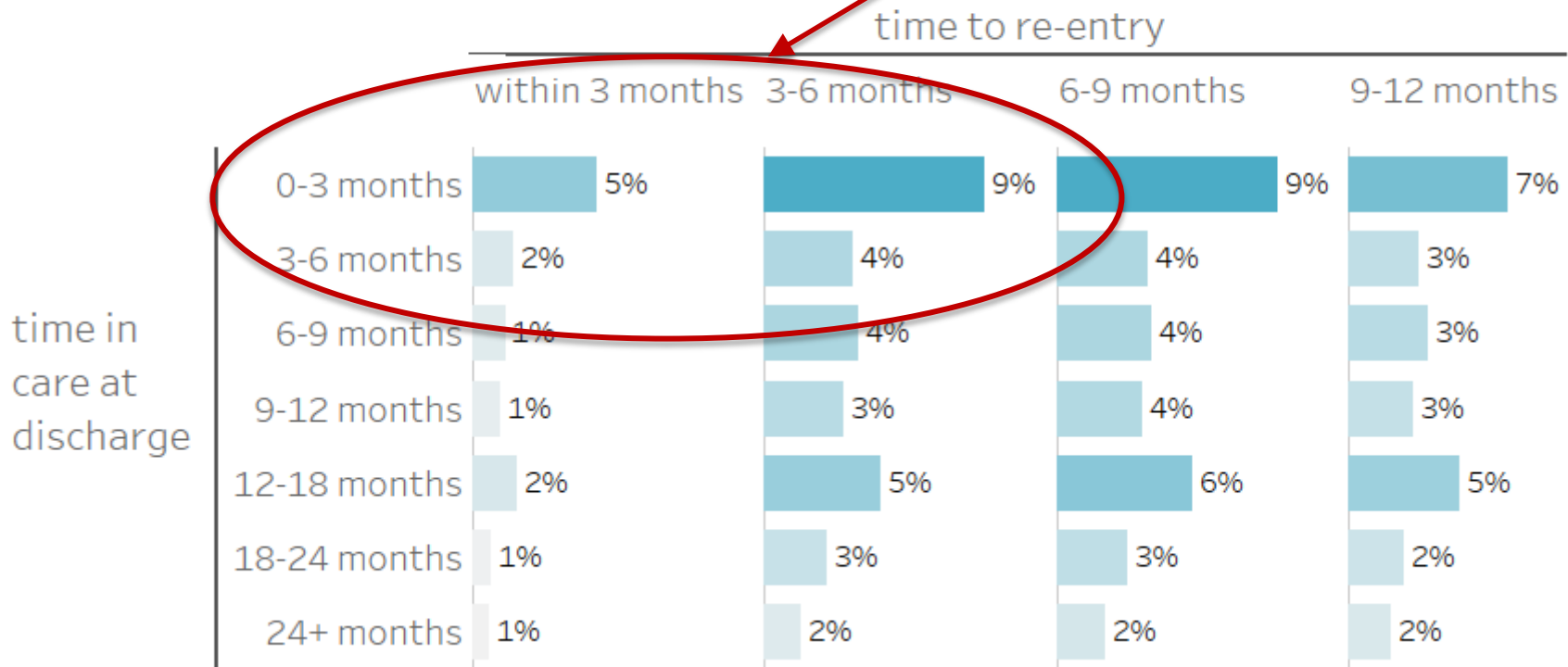
(cohorts of children discharged between 2013-2015)



Who re-enters... and when... and why?

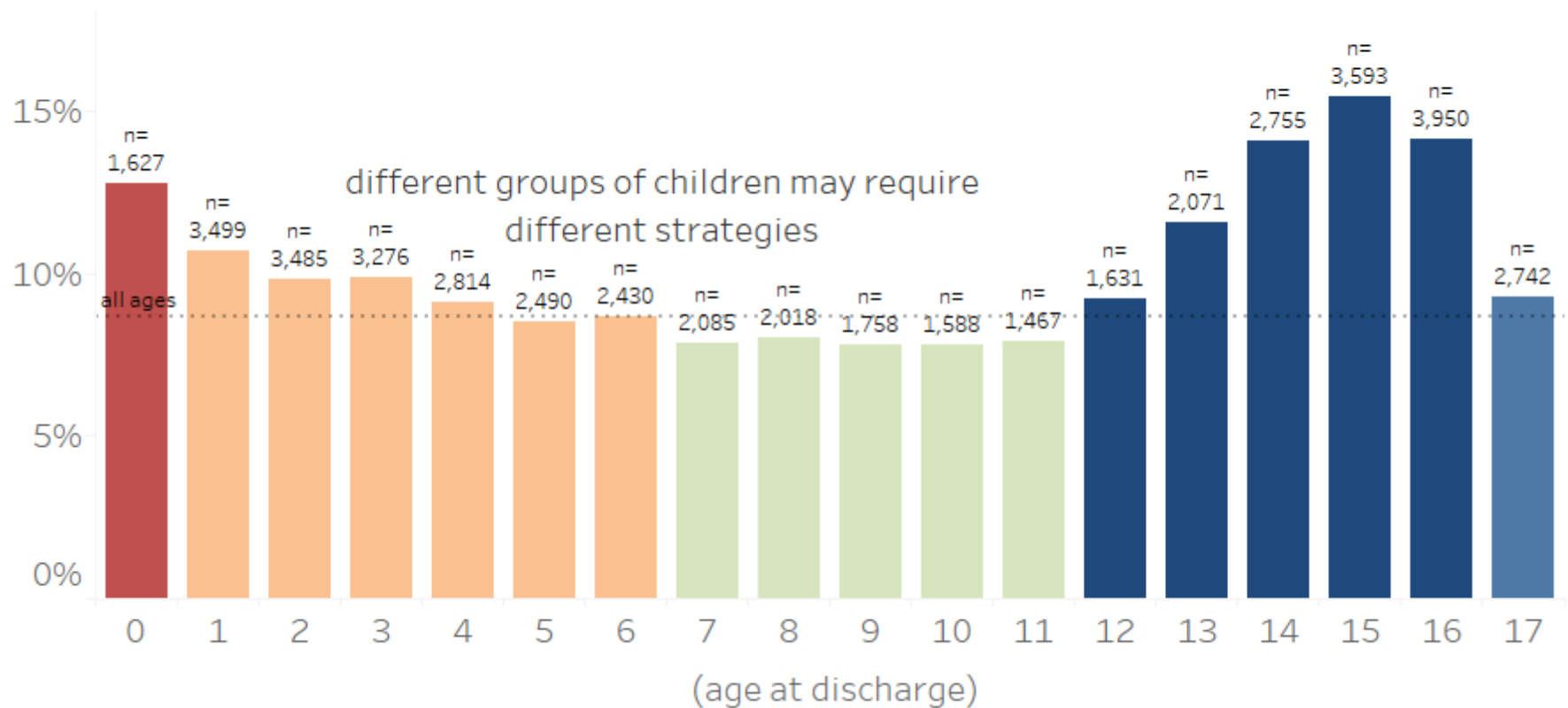
Length of prior episode *and* time to re-entry
(of all children re-entering care)

How to interpret?
1 in 5 (20%) children who re-enter care are in care for less than 6 months, and re-enter within 6 months of discharge.



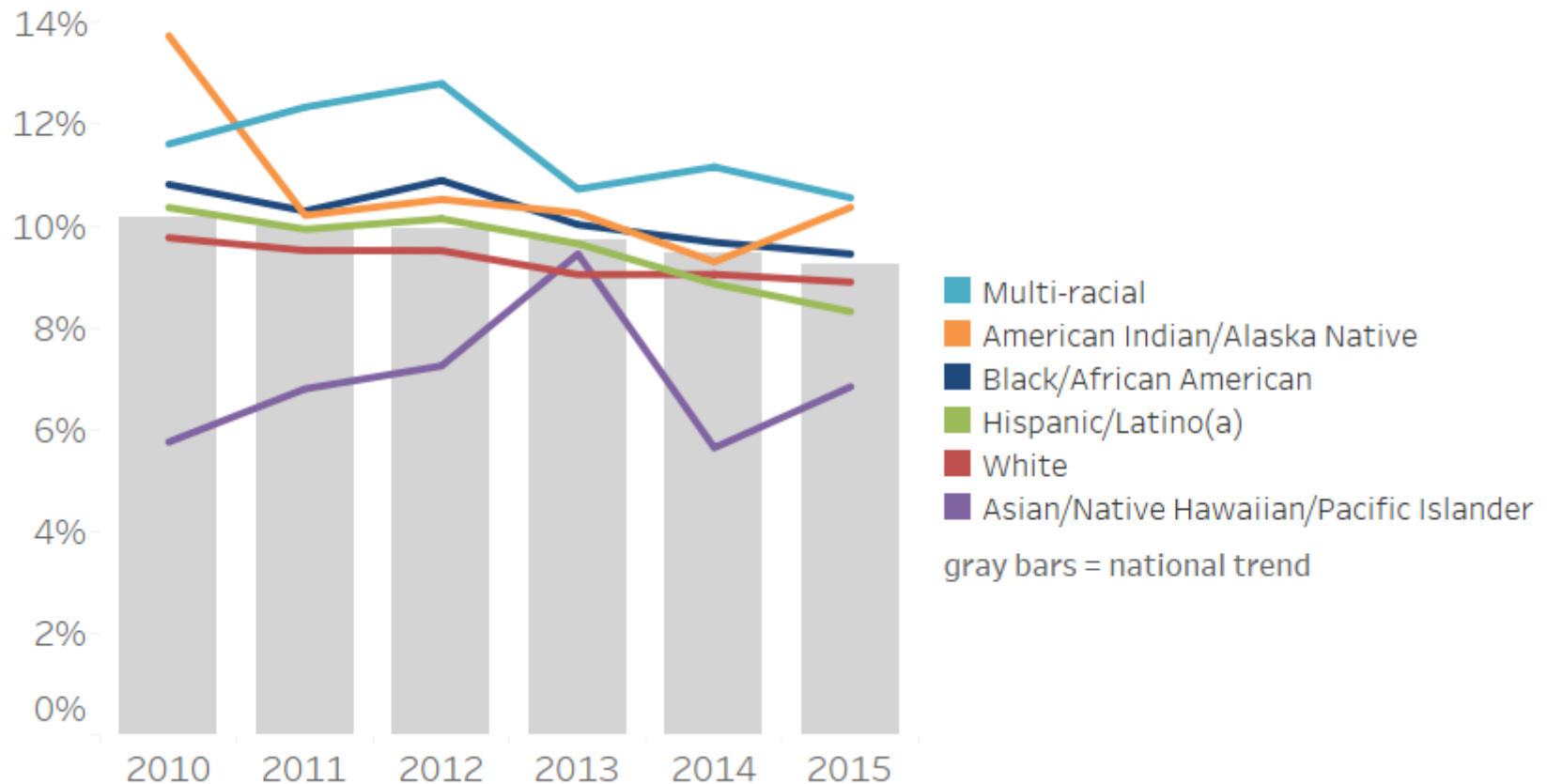
Who re-enters... and when... and why?

% of children of each age who re-enter care
(cohorts of children discharged between 2013-2015)



Who re-enters... and when... and why?

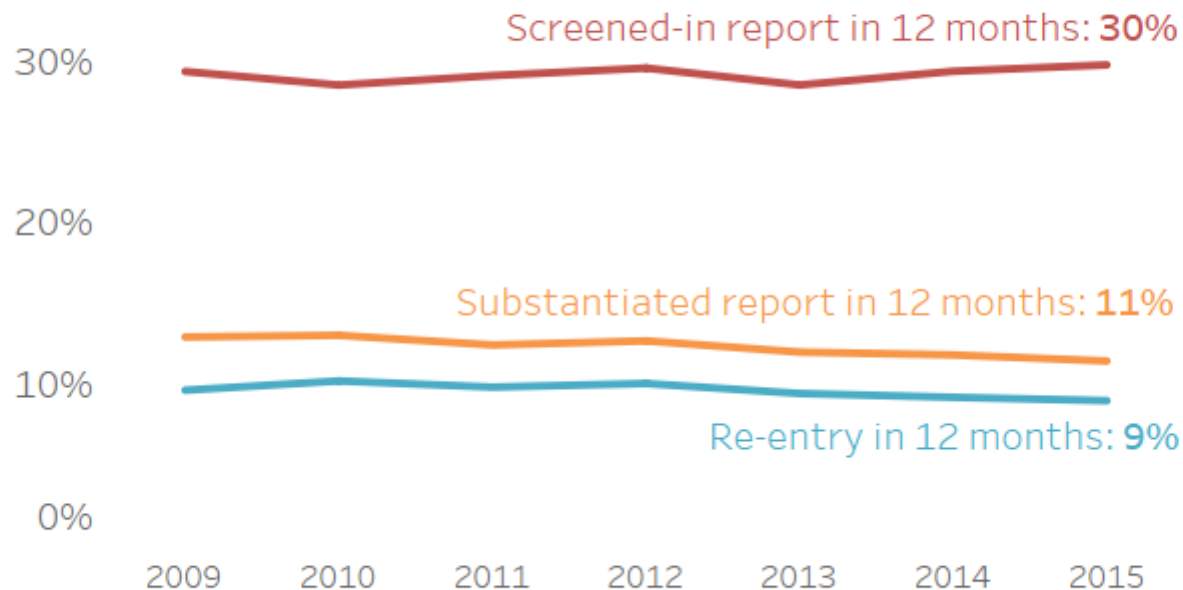
% of children re-entering in 12 months, by primary race/ethnicity



What else do we need to know?

National Trends

other measures are also valuable in understanding what happens within 12 months of achieving permanency



SAFE STRONG SUPPORTIVE

PREDICTORS OF RE-ENTRY

Variables associated with re-entering care



Youth and Children

- Black or African-American
- Age (infants, pre-teens and teens)
- Behavioral challenges (e.g., externalizing behaviors)
- Mental health challenges
- Developmental delays



Family

- Caregiver parenting competency
- Parental substance abuse
- Parental criminal history
- Lack of family support
- Number of children in the home
- Poverty
- Involvement due to neglect

Variables associated with re-entering care



Community

- Residential mobility
- Insufficient housing
- Neighborhood conditions (e.g., higher crime rates, less safe play space)



Administrative

- More placements
- Short stays
- Fewer years of experience by worker
- Residential or group home placement
- Not being placed with kin (placement with kin is protective)

Polling Question # 2

QUESTION:

What type of re-entry data does your organization analyze?

ANSWER (please choose one)

- CFSR
- Point in time
- Cohort
- Two or more of the above
- Do not (consistently) analyze
- Other - (*Please indicate in the Question section*)

SAFE STRONG SUPPORTIVE

Linda B. Bass, PhD LCMFT
Vice President of Clinical Services

THE KVC APPROACH TO SUSTAINED PERMANENCY

History of sustained permanency in Kansas

- During 1995-97, Kansas child welfare was privatized
 - KVC Kansas has provided services through this public-private partnership for more than 20 years
 - A focus on sustained permanency is woven into the state contracts (i.e. dedicated services to support lasting permanency)
 - Performance-based measurements (i.e. recidivism rates)

Front end loading

- Evidence-based approaches that support timely, lasting permanency
 - Safe & Connected Framework
 - Evidence based assessments and case planning
 - Parent Management Training- Oregon Model (PMTO), Trauma Systems Therapy (TST), Teen CONNECT, Strengthening Families Program (SFP), Seeking Safety

Front end loading (cont)

- Evidence-based approaches that support timely, lasting permanency
 - Relative placement
 - Frequent visitation
 - Siblings placed together
 - Children placed in or close to county of removal



Program components

- Flexible, adaptive services
 - Intensive to less-intensive service period that last one year post permanency
 - 24/7/365 support
 - Ongoing adoption support services
 - Dedicated staff with specialized training focused on sustained permanency

Program components (cont)

- Communication & training to courts and community partners
 - Relapse as part of recovery
 - Alternative safe caregiving options
 - Removal from home is another trauma for child(ren)

Program components (cont)

- Services to families focus on:
 - Skill building & problem solving
 - Respite/emergency care plans
 - Relapse prevention & planning
 - Improving access to community supports & services
 - Expanding support network
 - Support groups & mentoring

Use of data

- **Recidivism data** provides information about areas of strength and opportunities for system improvement
- **CSFR performance data**
- **Point-in-time data**
- Use of **predictive analytics** helps to identify needs of a family at time of entry into foster care that, if addressed, lead to improved permanency rates (initial and sustained)



Recommendations

- Involve parents in program development
 - KVC hosts an Engaging Parents/Developing Leaders Workgroup focused on system and service improvements across all programming
 - Use of phone calls and surveys to seek feedback from families and adjust services as needed

Recommendations (cont)

- Frequent communication, education and problem-solving with court and community partners
- Targeted use of data to respond to changing needs of families and improve front and back-end service delivery

KVC Kansas

Presenter:

Linda Bass, PhD LCMFT,
Vice President of Clinical Services



Polling Question # 3

QUESTION:

What is the greatest opportunity for improving your organization's approach to sustained permanency?

ANSWER (please choose one)

- Better understanding of data
- Partnering with constituents
- Implementing a new program
- Accessing additional funding
- 2 or more of the above
- Something else (*Please indicate where in the Question section*)



SAFE STRONG SUPPORTIVE

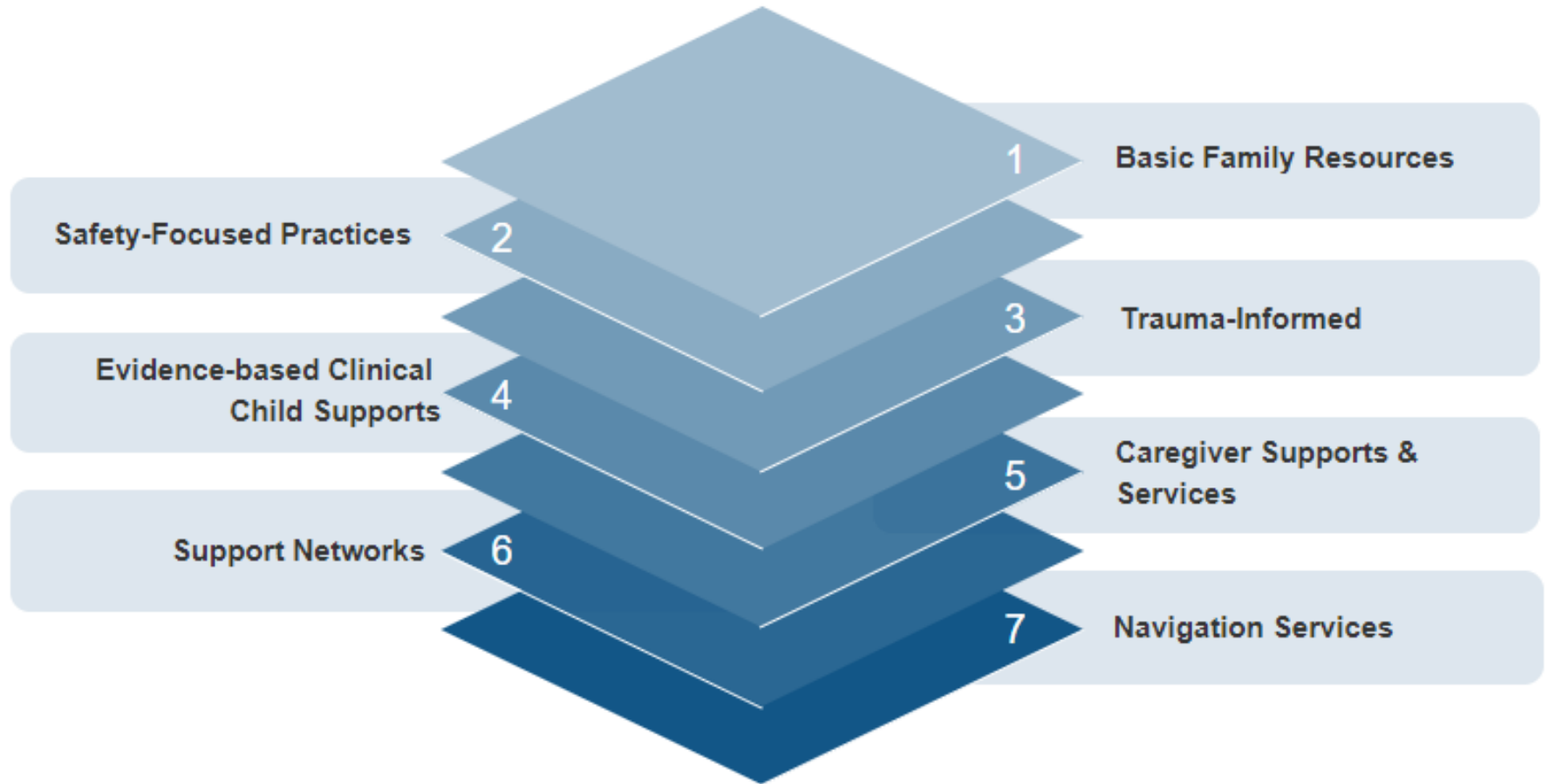
Yvonne Humenay Roberts

Casey Family Programs

RECAP AND PREVIEW OF WEBINAR PART 2

7 Components

of Existing Sustained Permanency Programs



Twitter

Using #SustainedPermanency

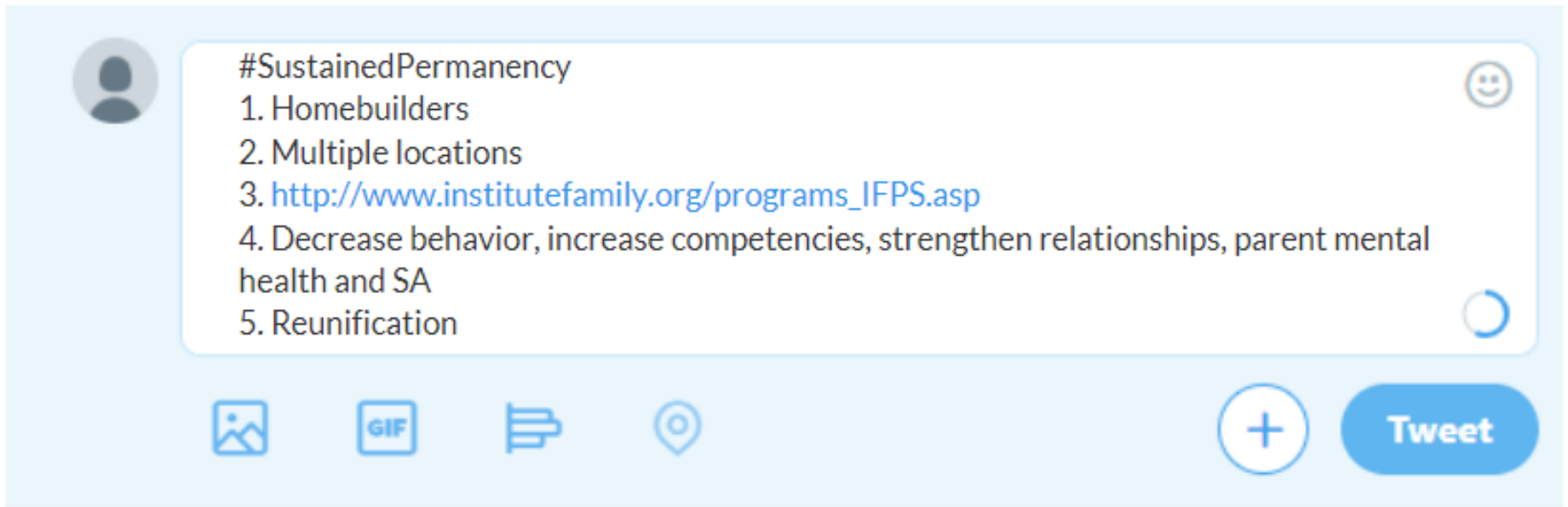
- Post questions and thoughts
- Tell us about your sustained permanency programs
 - We will summarize & post to CWLA & Casey websites

Twitter (cont)

Provide the following:

1. Program name
2. County & State
3. Website
4. Primary focus (Decrease child behavior problems, Increase parent competencies, Strengthen relationships, Other [explain])
5. Outcome targeted (Reunification, Adoption, Guardianship, or combination)

Twitter (cont): Example



Recap of today's webinar

1. Work must be value-driven and focused on children's quality of life
2. There are a lot of ways to examine re-entry data, each of which answers a different question
3. It is important to involve and engage all stakeholders

Sustained Permanency Webinar

Part 2: June 28

1. Hear a mother/son's re-entry story
2. Colorado DHS approach to sustained permanency
3. Impact of Family First on sustained permanency
4. Summary of practical steps to support sustained permanency



For more information

ResearchTeam@casey.org

<https://www.casey.org/Sustained-Permanency-Webinar>

Resources

The California Evidence-Based Clearinghouse for Child Welfare (CEBC)

- <http://www.cebc4cw.org/topic/post-permanency-services/>

National Quality Improvement Center for Adoption and Guardianship Support and Preservation (QIC-AG)

- <https://qic-ag.org/>

Effectively Implementing Effective Practices for Sustainable Permanency: A Synthesis of Research and Practice

[authored by the National Implementation Resource Network (NIRN) for The Colorado Department of Human Services' (CDHS)]

- <https://www.casey.org/Sustained-Permanency-Webinar>

Resources (cont)

CWLA's Children's Voice article... *Ten Practical Steps to Support Sustained Permanency*

- <https://www.cwla.org/from-the-next-issue-of-childrens-voice-ten-practical-steps-to-support-sustained-permanency/>

Supporting Lifelong Families: Steps Child Welfare Agencies Can Take to Prevent Children From Re-entering Foster Care

- <https://www.casey.org/supporting-lifelong-families-action-plan/>

Supporting Lifelong Families: Ensuring Long-Lasting Permanency and Well-Being

- <https://www.casey.org/supporting-lifelong-families/>

WRAP UP



CONTACT INFORMATION



Julie Collins
VP, Practice Excellence
CWLA

jcollins@cwla.org

www.CWLA.org